



## ASTRO AQUILA

### 65M MULTIPURPOSE OFFSHORE SUPPORT VESSEL

A 65M modern DP2 Multipurpose Offshore Support Vessel equipped with a 40T AHC Crane with a total POB Capacity of 79 (Upgradeable to 106) Total POB. Ideal for Hook Up, Cable Laying, IRM, Light Subsea, Supply and Dive/ROV Support Work.

## GENERAL PARTICULARS

Type of Vessel	:	65M OFFSHORE CONSTRUCTION VESSEL
Vessel Name	:	ASTRO AQUILA
Builder	:	POET Shipbuilding & Engineering Pte. Ltd.
Year Built	:	2022
Port of Registry	:	Singapore
Classification	:	ABS
Notation	:	+ A1 (E) OFFSHORE SUPPORT VESSEL, FFV-1, SPS, UWILD, + AMS + DPS-2

## PRINCIPLE PARTICULARS

LOA	:	approx. 65.00M
LBP	:	approx. 57.00M
Breadth (MLD)	:	approx. 16.20M
Depth (MLD)	:	approx. 6.00M
Draft (Design)	:	approx. 4.50M
Draft (Scantling)	:	approx. 5.00M
Dead Weight	:	approx. 1,700T
Deck Load (Design)	:	approx. 5.0 t/m <sup>2</sup>
Speed	:	approx. 12.00KTS
Deck Space	:	approx. 500M <sup>2</sup>
GRT / NRT	:	approx. 2490GRT / 747NRT

## ACCOMMODATION

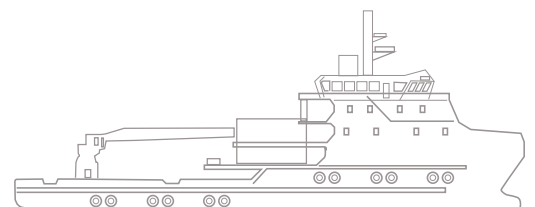
1 Man Cabin	:	7 Units
2 Man Cabin	:	14 Units
4 Man Cabin	:	11 Units
Total	:	79 Berths – Upgradeable to 105

## COMMUNICATION EQUIPMENTS

GMDSS Station	:	GMDSS A3A1/2/3
GMDSS Radio Area 3	:	(1) unit FURUNO RC-1800T
Radars	:	(1) unit FURUNO FAR-2117-D Radar + One (1) unit FURUNO 2137S-D S-Band Radar
AIS Systems	:	(1) unit FURUNO FA-150 AIS
GPS Navigators	:	(1) unit FURUNO GP-170 (D) navigator
Gyro Compass	:	(1) unit SIMRAD TWIN RGC 80

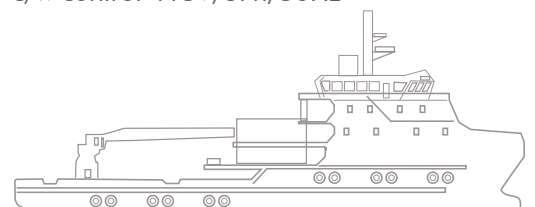
## TANK CAPACITY

Fuel Oil	:	429.2M <sup>3</sup>
Fresh Water	:	520.7M <sup>3</sup>
Water ballast	:	1115.8M <sup>3</sup>
Sewage	:	36.4M <sup>3</sup>
Dirty Oil	:	20.5M <sup>3</sup>
Bilge Holding Tank	:	20.5M <sup>3</sup>
Dispersant Tank (P)	:	8.5M <sup>3</sup>
Foam (S)	:	8.5M <sup>3</sup>



## ENGINE MACHINERY

Main Engine	:	(2) units of Niigata engine 6L26HLX, 2,000 PS. (1471kW) each, 750Rpm Medium Speed.
Z-Peller Unit	:	(2) sets, ZP-31CP. Driven by main engine.
Bow Thruster Unit	:	(2) unit KT-88B3 Kawasaki CPP Bow Thruster approx. 8 Tons
Main Gen Set	:	(4) unit Caterpillar C32 590kWe diesel driven coupled with Leroy Somer Alternator 560EKW (415V/3/50Hz).
Emergency Gen Set	:	(1) unit Volvo Penta D9-MG Emergency Diesel turbo-charged Generator set with after-cooler, rated approx 136 KW (415V/3/50Hz).
Main Switchboard	:	(1) unit HY Technologies Main Switchboard (4 x C32 Generator, AC 415V 3Ph 50hZ) (IP23)
Emergency	:	(1) unit HY Technologies Switchboard Emergency Switchboard (1 x Volvo Penta D9-MG Generator, AC 415V 3Ph 50hZ)
Anti-Heeling	:	(1) unit HOPPE Anti-Heeling System Systems System
Air Condition	:	(2) unit seawater-cooled main Systems air-conditioning unit c/w 2 x 100% Capacity Compressor Capacity approx 280Kw
MGPS	:	(1) Shipset Cathelco MGPS for 5 Sea Chest
Oily Water	:	(1) unit Boss 5T-107 OWS Separator Capacity approx 1.0m <sup>3</sup> /hr
Sewage Treatment	:	(1) unit Detegasa "DELTA" PRB Plant 595 Sewage Treatment Plant (for up to approx 80pax) c/w pump and grease trap
Fuel Oil Purifier	:	(2) unit Lub Oil Purifier; Capacity approx. 1,000L/hr
Fresh Water Maker	:	(2) unit Quantum RO 30T SW Reverse Osmosis Fresh Water Maker c/w UV Sterilizer System (QTM UV 1000P)
Cargo Oil Flow	:	(1) unit BM400 Cargo Oil Flow Meter Meter; Capacity range approx. 12m <sup>3</sup> /hr (min.) ~ 150m <sup>3</sup> /hr (max.)
Cargo Water Flow	:	(1) unit ARD 80 Cargo Water Meter Flow Meter; Capacity range approx. 0.5m <sup>3</sup> /hr (min.) ~ 170m <sup>3</sup> /hr (max.)
Bilge / Ballast / :	:	(2) unit Fire / GS pump Capacity approx. 100m <sup>3</sup> /hr at 60M
Fuel Oil Transfer	:	(2) unit Pump, Capacity approx. 10m <sup>3</sup> /hr at 20M
F.W. Cargo Pump	:	(1) unit pump Capacity approx. 75m <sup>3</sup> /hr at 100M
Cargo Fuel Oil	:	(1) unit pump Capacity approx. 75m <sup>3</sup> /hr at 100M
Dirty Oil / Sludge	:	(1) unit Pump pump Capacity approx. 5m <sup>3</sup> /hr at 45M
Emergency Fire	:	(1) unit B pump Capacity approx. 45m <sup>3</sup> /hr at 55M
External Fire Pump	:	(2) unit FFS Fire-Fighting pump Capacity approx. 1,700m <sup>3</sup> /hr seawater
Air Compressor	:	(2) unit Deno L2-25 Air-Compressor c/w control 415V/3Ph/50Hz



## SAFETY EQUIPMENTS

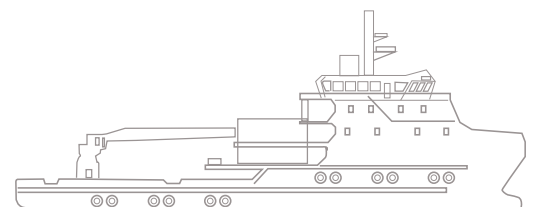
Life & Rescue Boat	:	(2) unit SOLAS-certified type enclosed life boat c/w davit (SWL 65KN), 40 men, of rigid construction.
Fire Monitors	:	(1) unit FFS Water monitors Capacity approx. 1200 m <sup>3</sup> /hr (1) unit FFS Water/Foam monitors Capacity approx. 1200 m <sup>3</sup> /hr (approx. 300 m <sup>3</sup> /hr for foam)
Oil Dispersant	:	Complete with (1) Oil Systems Dispersant Concentrate inductor, c/w (2) off-centre Flat Spray VeeJet Nozzle
Water Spray System	:	(1) unit FFS Water Spray (Curtain type) Capacity approx. 1000m <sup>3</sup> /h
Fire Extinguisher	:	(1) Shipset fire extinguishers as per ABS Safety Plan
Co2 Systems	:	(1) Shipset CO2 system
Fire Detection System	:	(1) Shipset Fire Detection alarm system
Fixed gas Detection	:	(1) Shipset Fixed Gas System Detection system
Fixed Local	:	(1) Shipset Fixed Local Application System Application system (6 zone - covering 02x Main Engines + 4x Generator)
Wet Chemical System	:	(1) Shipset Wet Chemical system (Galley - Deep Fat Fryer)

## MISCELLENOUS ITEMS

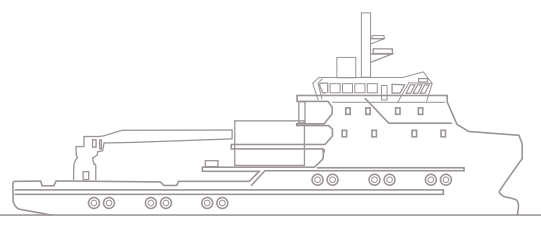
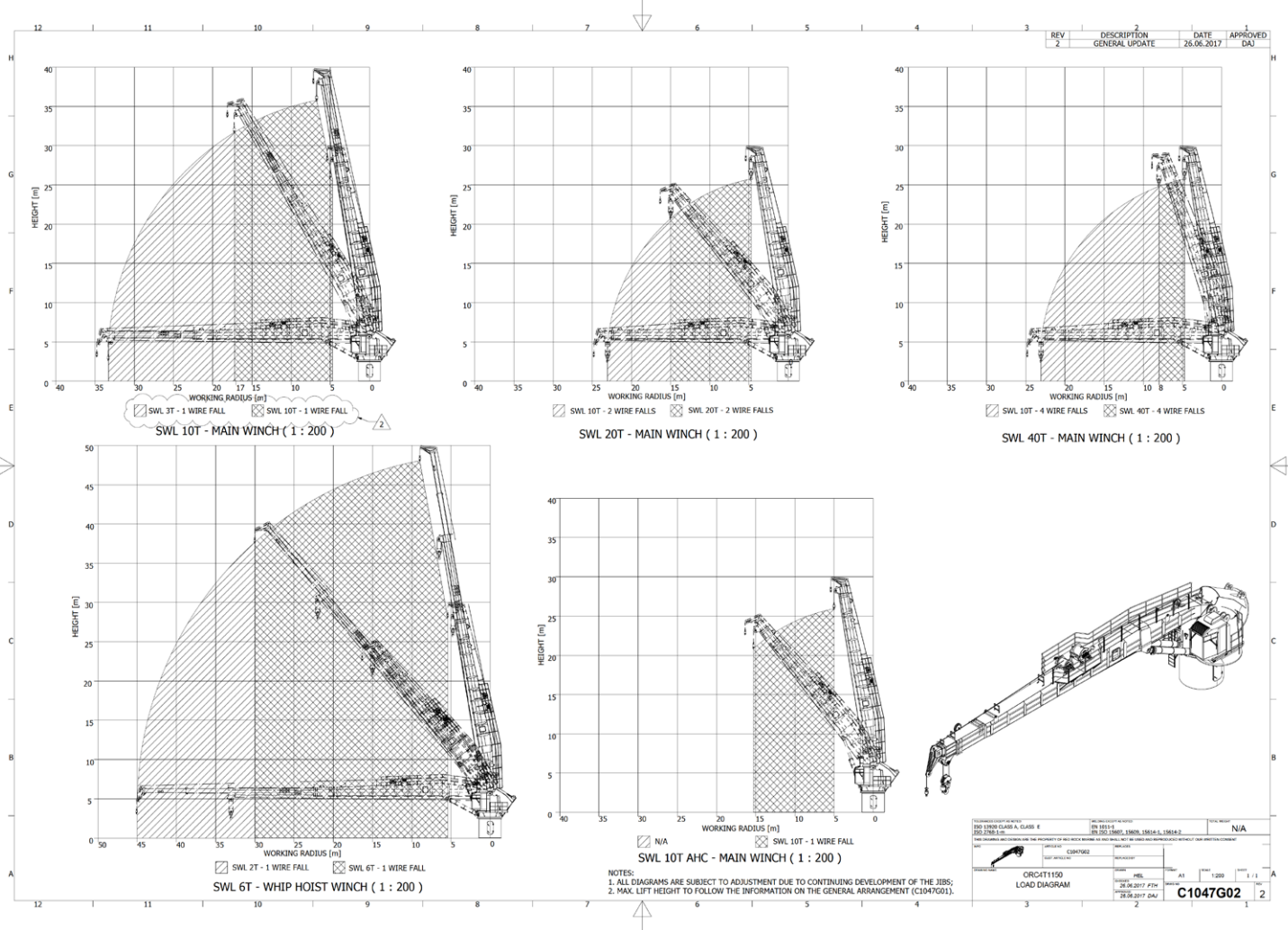
SCBA c/w Spare	:	(4) unit Drager SCBA Cylinder PSS3000 c/w Spare Cylinder
EEBD	:	(8) unit Drager Saver CF10 EEBD

## CRANE DETAILS

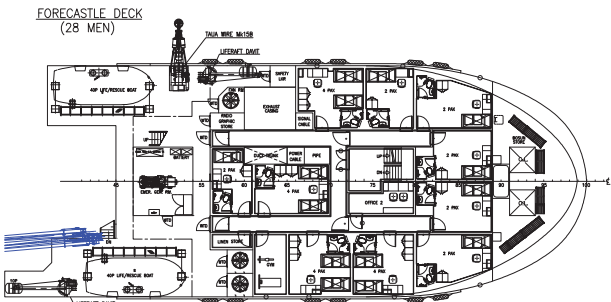
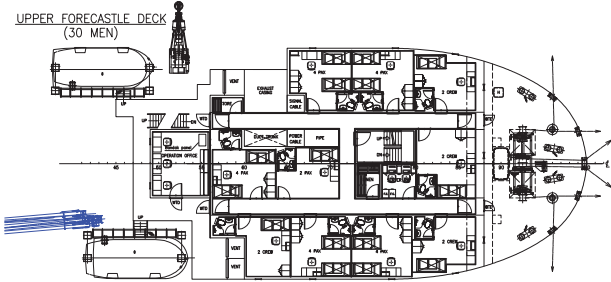
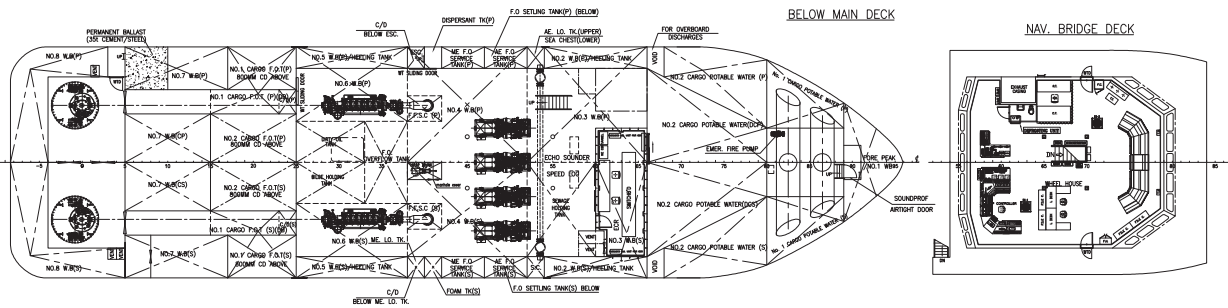
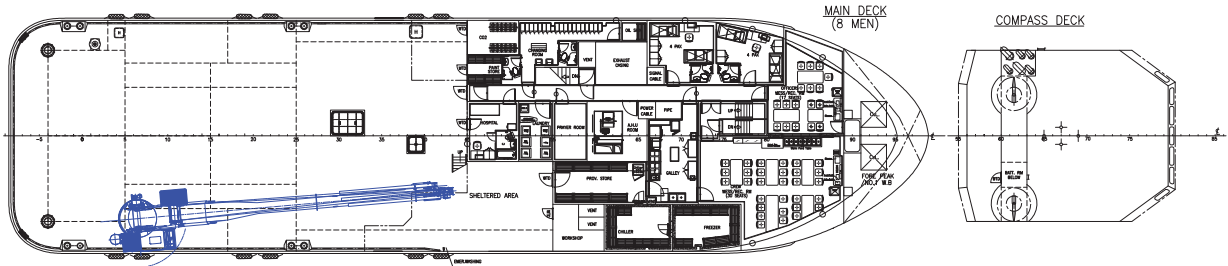
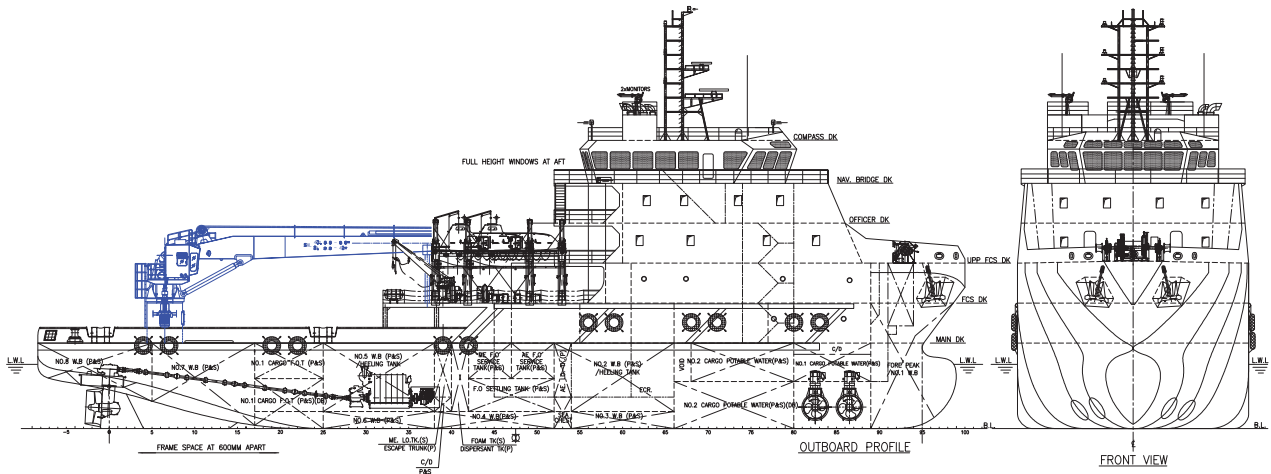
Deck Crane	:	Active Heave Compensated Telescopic Crane
Main winch capacity	:	40 T
Auxiliary winch	:	6 T
SWL @ 5.5m-45m	:	2 T
SWL @ 5.5m-30m	:	6 T
SWL @ 5.5m-17m	:	10 T
SWL @ 5.5m-15m	:	20 T
SWL @ 5.5m-8m	:	40 T
Max. load @ 5.5-15m for AHC mode	:	10T
Personnel lift @ 4-45m	:	1T



## ASTRO CRANE LOAD CHART



## GENERAL ARRANGEMENTS



### PRINCIPAL PARTICULARS

LENGTH OA	65.00m
LENGTH BP	57.00m
BEAM MLD.	16.20m
DEPTH MLD.	6.00m
DRAFT DESIGNED	4.50m
DRAFT SCANTLING	5.00m
COMPLEMENT	79 MEN
F.O.	429 M <sup>3</sup>
POTABLE WATER	520 M <sup>3</sup>
DECK CARGO SPACE	ABT 400 M <sup>2</sup>
DEADWEIGHT	ABT 1,400 TON
MAIN ENGINE	2,000PS X 2
TRIAL SPEED	ABT 12KTS

CLASS: ABS ● AT ○ OFFSHORE SUPPORT VESSEL (SUPPLY, OVP 1) SPS  
 ● ABS ● DPS-2

