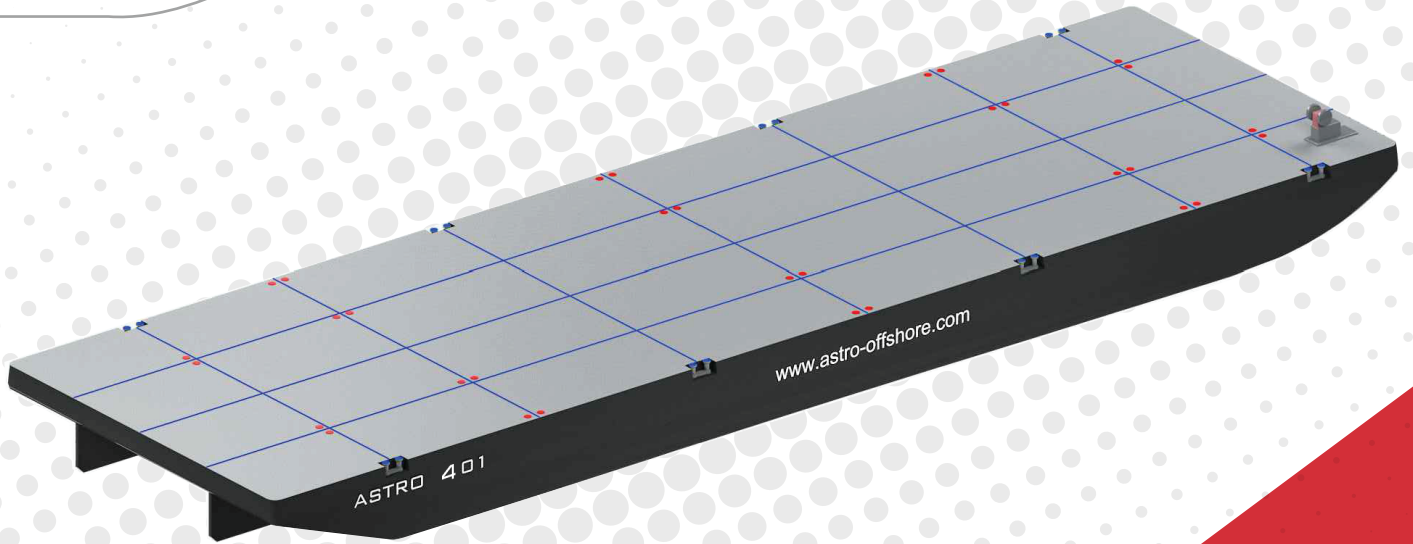




**ASTRO OFFSHORE**



# **ASTRO 401**

**122M DECK CARGO BARGE**

## PRINCIPLE PARTICULARS

PORT OF REGISTRY	Singapore
OFFICAL NUMBER	39776
BUILT	2012 / Jiangsu Hong
NOTATION	+ 100AT Potoon, I + HULL Pontoon
CLASS	Bureau Veritas

## ADDITIONAL DETAILS

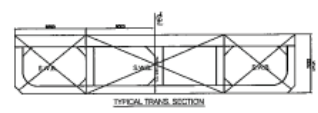
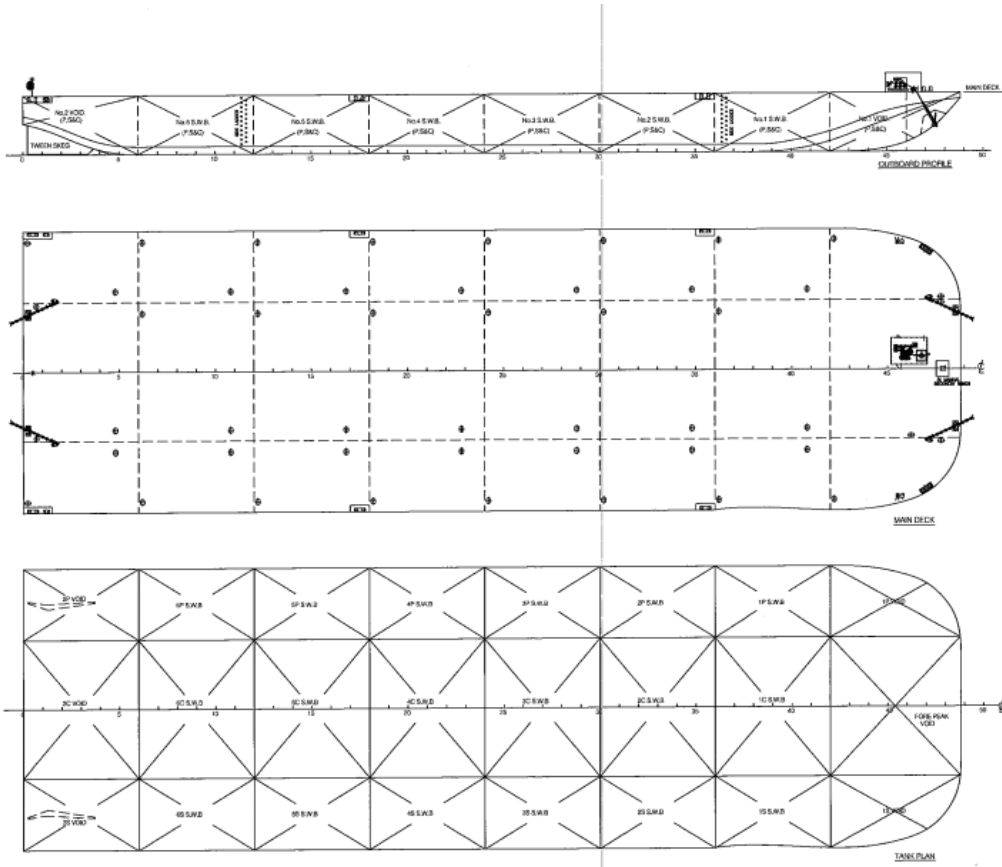
LENGTH OVERALL	122 M
BREADTH OVERALL	36.59 M
DEPTH	7.62 M
DESIGNED DRAFT	5.80 m
DECK STRENGTH	25 MT
GRT	9029
NRT	2708
DWT	18,877 T

## MACHINERY & EQUIPMENT

ANCHOR	1 X 3060 KG Baldt Stockless Anchor
ANCHOR CHAIN	1 x 250m Length, Dia. 48 mm Wire Rope, MBL > 1370 kN
RECOVERY WINCH	1 x 10T, Diesel Engine Driven
NAVIGATION LIGHT	4 x Solar Powered Anchor Light



## GENERAL ARRANGEMENTS



**PRINCIPAL PARTICULARS:**

LENGTH O.A.	122.00 m (400'-0")
BEAM M.I.D.	36.58 m (120'-0")
DEPTH M.I.D.	7.60 m (25'-0")
FRAME SPACING	2.26 m (9'-1")
DECK LOADING	25 SH/2
COMPLEMENT	NIL

NO.	1	DESCRIPTION	DATE
REV.	0	ISSUE DECK CHANGING	05/11/2010
General Arrangement			



All details are believed to be correct but without guarantee

