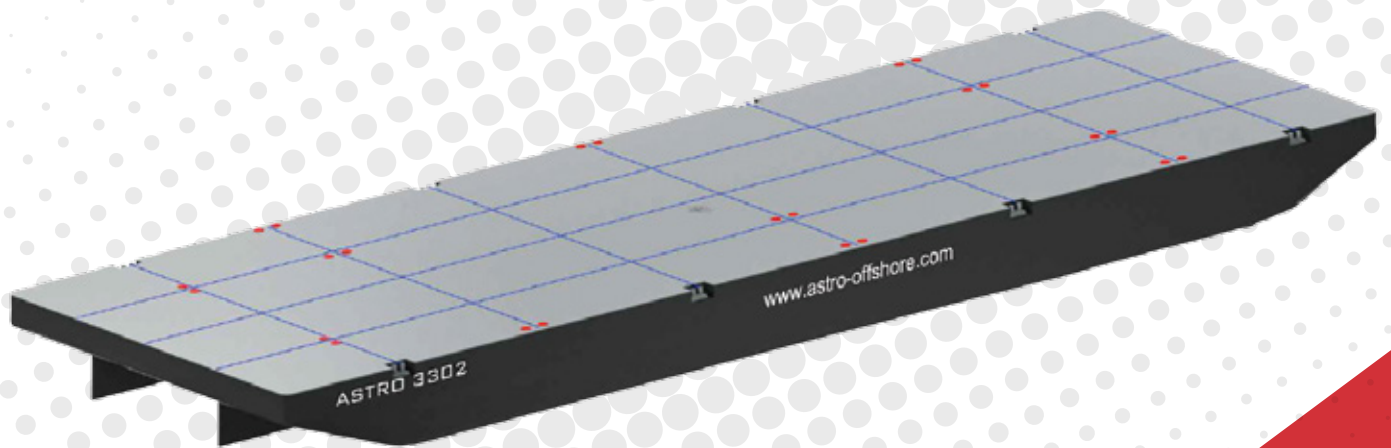




ASTRO OFFSHORE



ASTRO 3302

330 X 100 X 20 FT - FLAT TOP STEEL BALLASTABLE BARGE

PRINCIPLE PARTICULARS

Year of Build	2008
Registry	Singapore
Class	ABS
GRT	4948
NRT	1484
LOA	100.58 M
Breadth	30.48 M
Depth	6.10 M
Draft Max	4.73 M
Bulkheads	3 x longitudinal, 7 transverse (32 Tanks)
Deck Area (approx)	2600 M2
Deck Strength	25 T / M2
Deadweight	11236t

MAIN TOWING GEAR

Chafe Chains	2 x 64mm x 8m (Port & Stbd)
Shackles	7 x 85T SWL Bow Shackles
Pennant Wire	1 x 64mm x 20m - Steel Rope
Bridle Wires	2 x 64mm x 14.5m - Steel Rope
Delta Plate	1 x 85T SWL

EMERGENCY TOWING GEAR

Chafe Chains	2 x 64mm x 8m (Port & Stbd)
Shackles	7 x 85T SWL Bow Shackles
Pennant Wire	1 x 56mm x 20m - Steel Rope
Bridle Wires	2 x 56mm x 20m - Steel Rope
Delta Plate	1 x 85T SWL
Emergency Pick Up Rope	1 x 88mm x 50m - Polypropylene Rope
Emergency Pick Up Shackle	1 x 55T SWL Bow Shackle

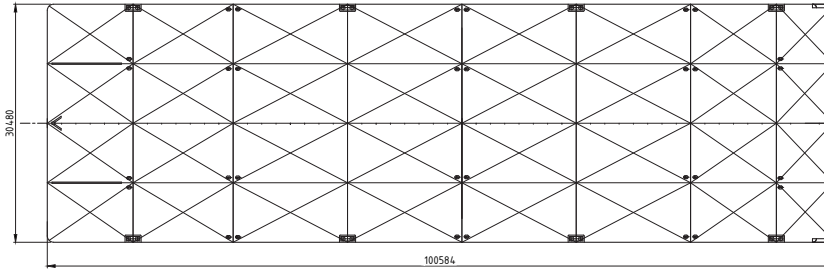
DECK FITTINGS

Smit Brackets w/ Fairleads	
Anchor	1 x 1,000 Kg Stokless Bower
Anchor Winch	1 x 10 SWL manual Winch
Bridle Recovery Winch	1 x 5T SWL manual Winch
Damage Control Box	Full inventory as per ARAMCO / ADMA standards
Bollards	8 x Double bollards
Steel Ladders	Port & Stbd
Steel handrailing	No
Pipe Stanchions	No
Skegs	Port & Stbd

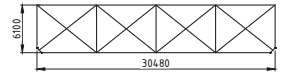


GENERAL ARRANGEMENTS

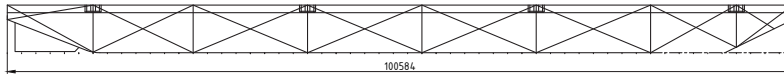
GENERAL ARRANGEMENT PLAN - ASTRO 3302



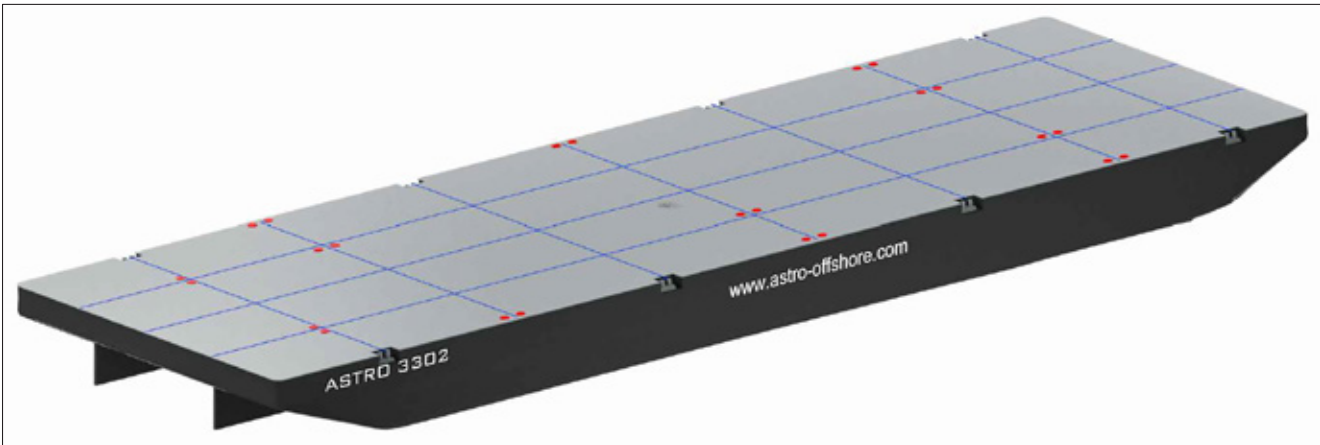
PLAN VIEW



REAR VIEW



SIDE VIEW



ISOMETRIC VIEW

