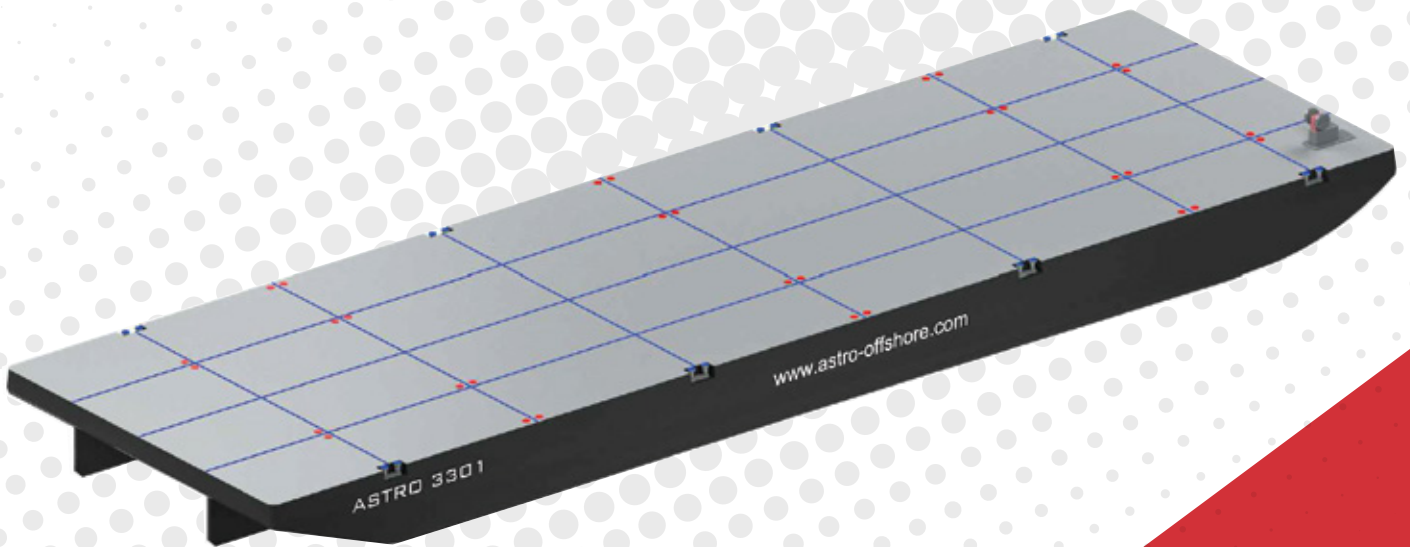




ASTRO OFFSHORE



ASTRO 3301

330 X 100 X 20 FT - FLAT TOP STEEL BALLASTABLE BARGE

PRINCIPLE PARTICULARS

Year of Build	2011
Registry	Singapore
Class	Bureau Veritas
GRT	4952
NRT	1485
LOA	100.58 M-
Breadth	30.48 M
Depth	6.10 M
Draft Max	4.73 M
Deck Area (approx)	2600 M2
Deck Strength	20 T / M2
Deadweight	11,000 T

MAIN TOWING GEAR

Chafe Chains	2 x 64mm x 16m (Port & Stbd)
Shackles	7 x 85T SWL Bow Shackles
Pennant Wire	1 x 64mm x 12m - Steel Rope
Bridle Wires	2 x 64mm x 16m - Steel Rope
Delta Plate	1 x 85T SWL

EMERGENCY TOWING GEAR

Chafe Chains	2 x 64mm x 16m (Port & Stbd)
Shackles	7 x 85T SWL Bow Shackles
Pennant Wire	1 x 64mm x 12m - Steel Rope
Bridle Wires	2 x 64mm x 16m - Steel Rope
Delta Plate	1 x 85T SWL
Emergency Pick Up Rope	1 x 88mm x 50m - Polypropylene Rope
Emergency Pick Up Shackle	1 x 55T SWL Bow Shackle

DECK FITTINGS

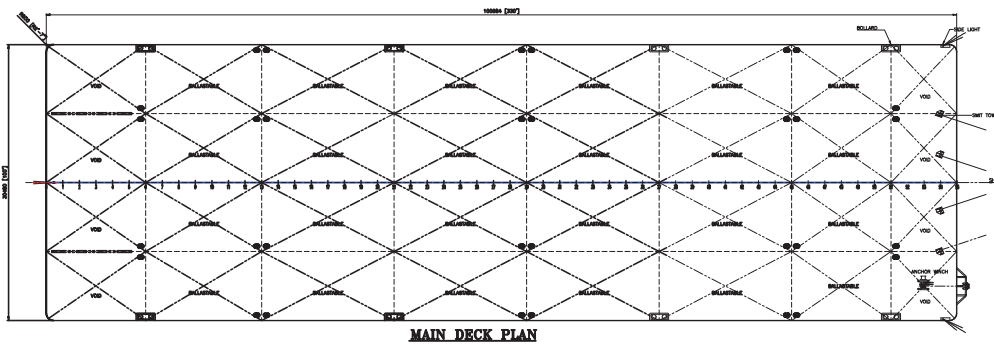
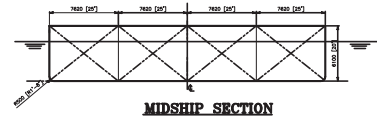
Smit Brackets w/ Fairleads	
Anchor	1 x 1,000 Kg Stokless Bower
Anchor Winch	1 x 5T SWL manual Winch
Bridle Recovery Winch	1 x 5T SWL manual Winch
Damage Control Box	Full inventory as per ARAMCO / ADMA standards
Bollards	8 x Double bollards
Steel Ladders	Port & Stbd
Steel handrailing	No
Pipe Stanchions	No
Skegs	Port & Stbd



GENERAL ARRANGEMENTS

330 x 100 x 20 Ft - Flat Top Steel Ballastable Barge

GENERAL ARRANGEMENT PLAN - ASTRO 3301



PRINCIPLE DIMENSIONS

LENGTH OVERALL	: 100.584 M (330'- 0")
BREADTH MOULDED	: 30.480 M (100'- 0")
DEPTH MOULDED	: 6.100 M (20'- 0")
DRAFT MOULDED	: 4.500 M
FRAME SPACING	: 1.830 M (6'- 0")
DECK LOADING	: 20.0 T/M ²

NOTATION

ABS A1 BARGE

GENERAL NOTE:

1. ALL TANKS' SCANTLINGS ARE DESIGNED FOR CARRYING BALLAST
2. ALL MANHOLES TO BE OF FLUSH TYPE

