

# **ASTRO 251**

250 X 80 X 16 FT DECK CARGO / TANK BARGE

## PRINCIPLE PARTICULARS

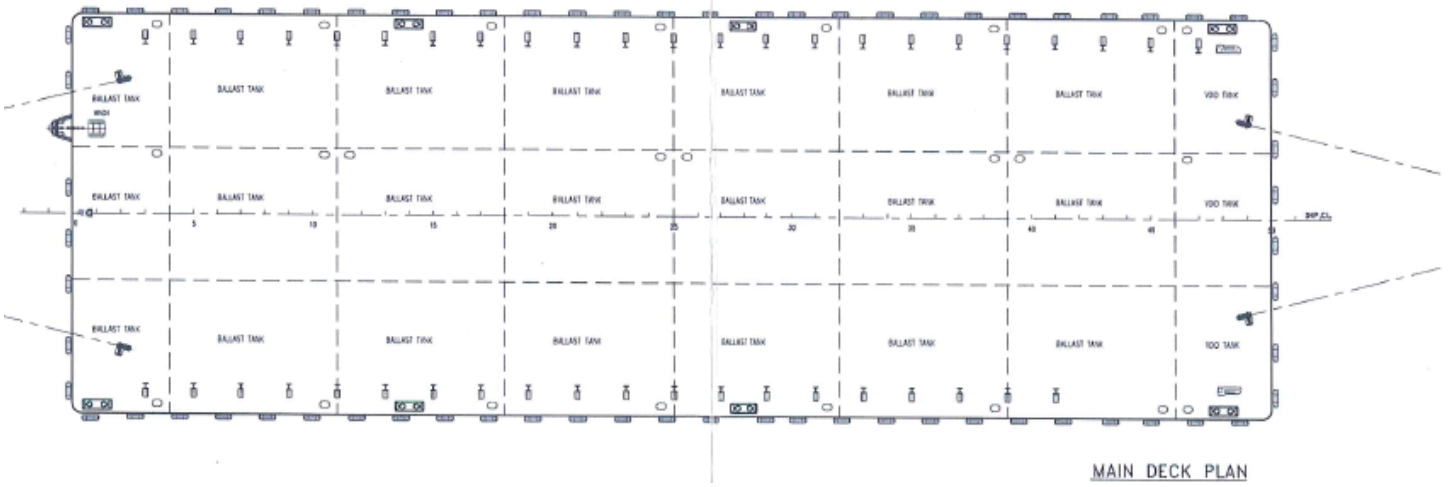
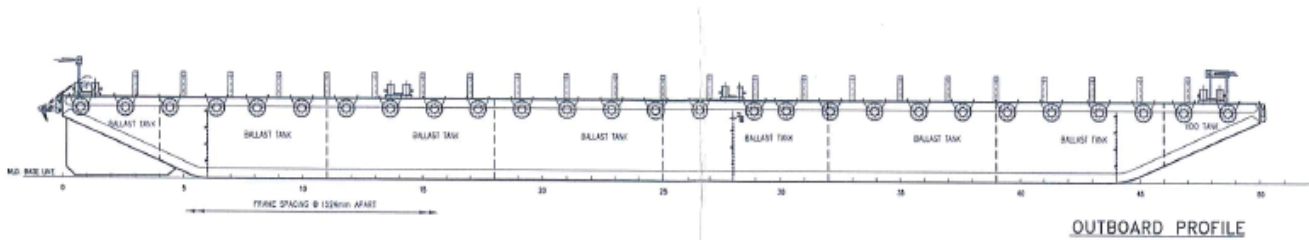
CLASS	Bureau Veritas (B.V.)
I + HULL	Pontoon
PORT OF REGISTRY	Singapore
BUILT	China
YEAR OF BUILD	2013
DECK LOADING	15 t/m <sup>2</sup>
LENGTH (OA)	76.2M -LOA
BREADTH (MLD)	80ft / 24.38m
DEPTH (MLD)	16ft / 4.88m
DRAFT (MAX)	3.8m
DEADWEIGHT	5385 tons (approx.)

## DECK EQUIPMENT

MOORING BOLLARDS	8 X 12" N.B. Heavy Pipe
ANCHOR	1 x 1,000 kg Stockless Bower
NAVIGATION	Bow Light (P&S) and Stern Lift Stand
TOWING BRACKETS WITH FAIRLEADS	2 X 135T SWL Schmit towing brackets (P&S) fwd
CARGO STANCHIONS	Total 43 x (12" x 12" x 118 kg/m) <sup>1</sup> Beam stanchions (P&S)
SCANTLINGS	Top 18mm
Bottom	14mm
Side	14mm
Bulkhead	10mm
SKEGS	Fitted at both port and starboard
NO. OF BULKHEADS	2 Longitudinal and 7 Transverse



## GENERAL ARRANGEMENTS



All details are believed to be correct but without guarantee

